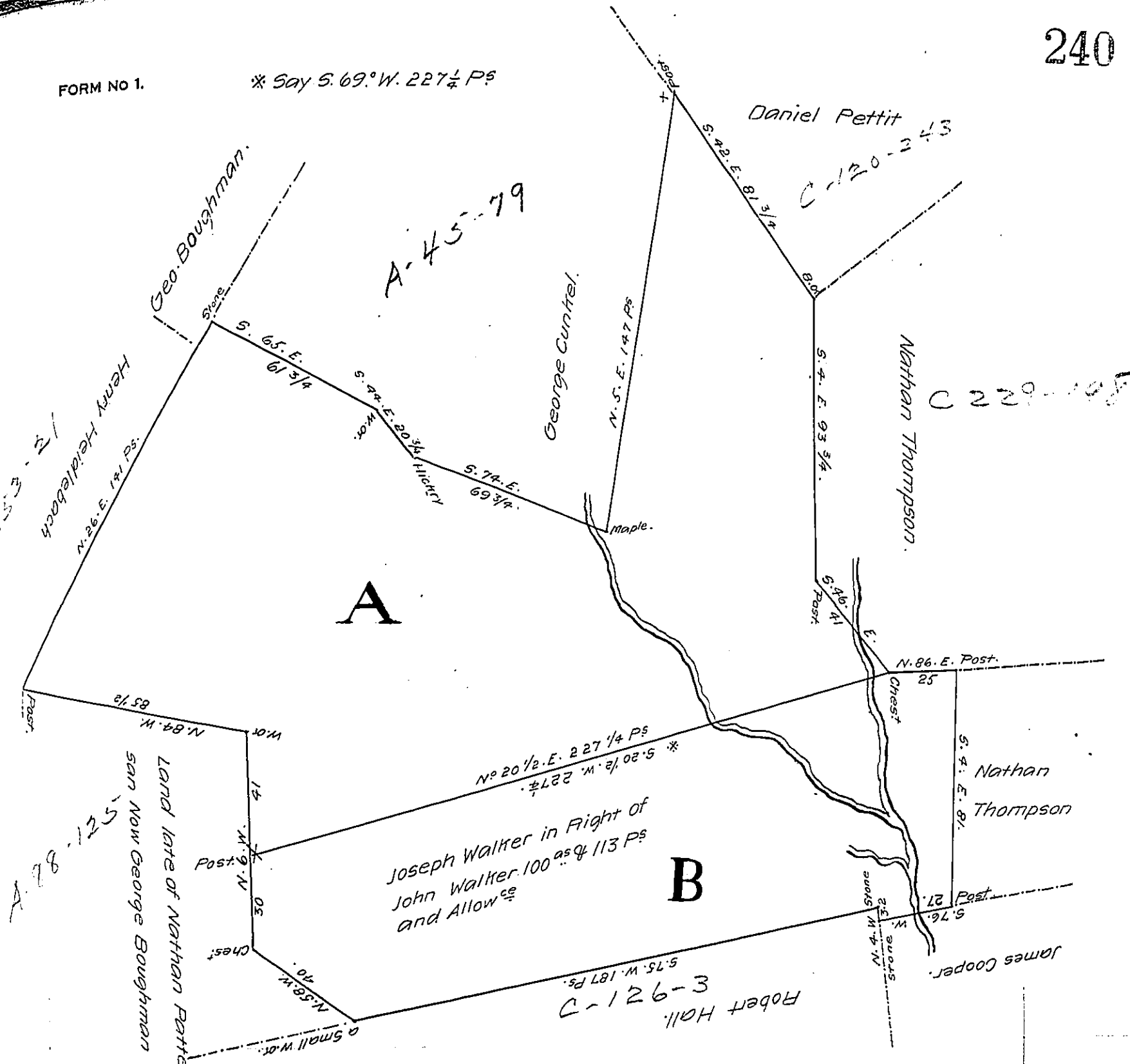


FORM NO 1.

\* Say S. 69° W. 227 1/4 Ps



The above are two Draughts of two Tracts of Land Situate Part thereof in Sadsbury Township and Part in Bart Township in the County of Lancaster The Tract. A. Containing 195<sup>as</sup> & 10 Ps. and the Usual Allowance of Six Pr. Cent for Roads &c. Surveyed the 17<sup>th</sup> Day of March A.D. 1786 for Joseph Walker, By Virtue of a Warrant Dated the 22<sup>d</sup> Day of December A.D. 1785 &c And the Tract. B. Containing 100<sup>as</sup> & 113 Ps. and the Allowance aforesaid, Surveyed on the aforesaid 17<sup>th</sup> Day. March A.D. 1786, for the said Joseph Walker in Right of John Walker By Virtue of a Warrant Dated the 8<sup>th</sup> Day of October A. D. 1743.

P<sup>r</sup> Henry Ream. —

To John Lukens Esq. S.G.

IN TESTIMONY that the above is a copy of the original remaining on file in the Department of Internal Affairs of Pennsylvania, made conformably to an Act of Assembly approved the 16th day of February, 1833, I have hereunto set my Hand and caused the Seal of said Department to be affixed at Harrisburg, this twenty second day of April 1907.

*Isaac P. Brown*  
 Secretary of Internal Affairs.